

ISMRM 2013

Contrast-Enhanced MRA: Optimizing Safety and Efficacy



Moderator and Panelist

Martin Prince, MD, PhD, FACR

*Professor of Radiology,
Weill Cornell and Columbia Universities New York, New York*

Symposium Faculty

J. Paul Finn, MD

*Professor of Radiology, Medicine & Biomedical Physics Chief,
Vice Chair, Imaging Technology Department of Radiology
David Geffen School of Medicine UCLA*

Jeffrey H. Maki, MD, PhD

*Professor of Radiology
Director of Body MRI Department of Radiology
University of Washington / PSVAHCS Seattle, Washington*

Diego R. Martin, MD, PhD, FRCPC

*The Cosden Professor and Chairman
Department of Medical Imaging
University of Arizona University Medical Center*

Agenda

- 6:30 pm** Meeting Room #255 EF Opens
- 6:45** Welcome & Introduction
- *Martin Prince, MD, PhD, FACR*
- 6:50** Optimizing the Use of Contrast in the Assessment of Peripheral Artery Disease
- *Jeffrey H. Maki, MD, PhD*
- 7:10** Grading of Renal Artery Stenosis: How To
- *Martin Prince, MD, PhD, FACR*
- 7:30** Making Sense of the Newer Agents for Contrast-Enhanced MRA
- *J. Paul Finn, MD*
- 7:50** Minimizing Risk in Patients with Reduced Renal Function
- *Diego R. Martin, MD, PhD, FRCPC*
- 8:10** Interactive Q & A Session -
- *Martin Prince, MD, PhD, FACR*
- 8:30 pm** End of Symposium

April 23

Tuesday

6:30 pm - 8:30 pm

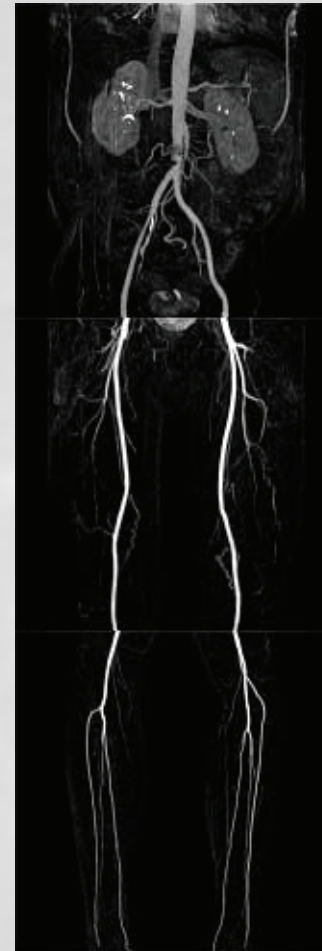
Meeting Room #255 EF

Salt Palace Convention Center
Salt Lake City, Utah

**Please Note: Limited Seating
Appetizers Served During Symposium**

ISMRM 2013

Contrast-Enhanced MRA: Optimizing Safety and Efficacy



Moderator and Panelist

Martin Prince, MD, PhD, FACR

*Professor of Radiology,
Weill Cornell and Columbia Universities New York, New York*

Symposium Faculty

J. Paul Finn, MD

*Professor of Radiology, Medicine & Biomedical Physics Chief,
Vice Chair, Imaging Technology Department of Radiology
David Geffen School of Medicine UCLA*

Jeffrey H. Maki, MD, PhD

*Professor of Radiology
Director of Body MRI Department of Radiology
University of Washington / PSVAHCS Seattle, Washington*

Diego R. Martin, MD, PhD, FRCPC

*The Cosden Professor and Chairman
Department of Medical Imaging
University of Arizona University Medical Center*

Agenda

- 6:30 pm** Meeting Room #255 EF Opens
- 6:45** Welcome & Introduction
- *Martin Prince, MD, PhD, FACR*
- 6:50** Optimizing the Use of Contrast in the Assessment of Peripheral Artery Disease
- *Jeffrey H. Maki, MD, PhD*
- 7:10** Grading of Renal Artery Stenosis: How To
- *Martin Prince, MD, PhD, FACR*
- 7:30** Making Sense of the Newer Agents for Contrast-Enhanced MRA
- *J. Paul Finn, MD*
- 7:50** Minimizing Risk in Patients with Reduced Renal Function
- *Diego R. Martin, MD, PhD, FRCPC*
- 8:10** Interactive Q & A Session -
- *Martin Prince, MD, PhD, FACR*
- 8:30 pm** End of Symposium

April 23

Tuesday

6:30 pm - 8:30 pm

Meeting Room #255 EF

Salt Palace Convention Center
Salt Lake City, Utah

**Please Note: Limited Seating
Appetizers Served During Symposium**