

ISMRM Workshop on: Magnetic Resonance Imaging of Cardiac Function



New York, NY, USA • 17–20 August 2017
 NYU Langone Medical Center, New York City, NY, USA

TARGET AUDIENCE: The workshop is designed for both scientists and clinicians including scientists, engineers, and physicians interested in using MRI in cardiac research; clinicians involved with management of heart disease, including cardiologists, radiologists, surgeons, and MRI technologists; and industrial scientists, involved with imaging systems, image analysis software, and pharmaceuticals.

COMMITTEE CHAIRS:

Chair: Leon Axel, M.D., Ph.D.
 NYU School of Medicine,
 New York, NY, USA

Teodora M. Chitiboi, Ph.D.
 NYU School of Medicine
 New York, NY, USA

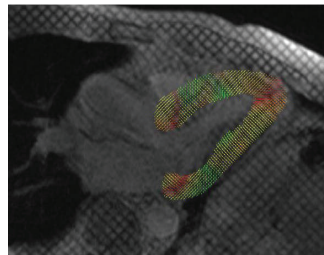
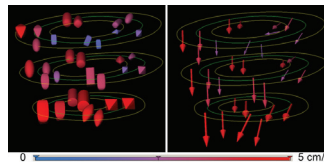
Daniel B. Ennis, Ph.D.
 David Geffen School of Medicine
 Los Angeles, CA, USA

Frederick H. Epstein, Ph.D.
 University of Virginia
 Charlottesville, VA, USA

Victor A. Ferrari, M.D.
 University of Pennsylvania
 Medical Center
 Philadelphia, PA, USA

El-Sayed H. Ibrahim, Ph.D.
 University of Michigan
 Ann Arbor, MI, USA

Alistair A. Young, Ph.D.
 University of Auckland
 Auckland, New Zealand



OVERVIEW

The Workshop on Magnetic Resonance Imaging of Cardiac Function will cover the latest advances in the development and application of MRI in the evaluation of cardiac function. The assessment of cardiac function is an important part

of clinical cardiac care, but conventional methods to assess it have many limitations. While MRI has become generally accepted as the “gold standard” method for assessment of global function, there exists substantial potential for it to provide much more detailed and quantitative information on cardiac function. This Workshop will focus on both basic and applied aspects of the assessment of cardiac function with MRI.

The Workshop will emphasize both the pathophysiologic and clinical aspects of cardiac function and its assessment with MRI, and the technical methods underlying the imaging and quantitative analysis of cardiac function with MRI. Another major goal is to facilitate communication between practitioners interested in both the technical and clinical sides of MRI.

This Workshop will provide educational overview presentations, as well as in-depth discussions on specific aspects of the state-of-the-field, by invited experts (including junior scientists). It will provide a venue for research presentations by the attendees; there will also be panel discussions on important issues

that will need to be addressed as the field progresses. Abstracts will be accepted as either brief oral proffered presentations or as posters.

EDUCATIONAL OBJECTIVES

Upon completion of this activity, participants should be able to:

- Describe the basic physiologic and pathologic aspects of cardiac function;
- Compare different imaging and analysis approaches used to assess cardiac function with MRI;
- List current challenges for the use of MRI in cardiac function assessment;
- Analyze several newly emerging methods for acquiring and analyzing MR images of cardiac function, and their potential applications in both preclinical research and clinical care; and
- Discuss the challenges of establishing these emerging methods and applications in the clinic.

FOR MORE INFORMATION INCLUDING HOUSING & REGISTRATION, PLEASE VISIT:

[www.ismrm.org/workshops/
Cardiac17/overview.htm](http://www.ismrm.org/workshops/Cardiac17/overview.htm)

OR CALL: +1 510 841 1899