

ISMRM Workshop on: Molecular & Cellular MRI: Focus on Integration



08–11 June 2016 • NH Barbizon Palace
Amsterdam, The Netherlands

TARGET AUDIENCE: This workshop is designed for researchers and clinicians (oncologists, neurologists, cardiologists, internists, radiologists, pathologists, surgeons) developing contrast agents and MCI techniques or studying/treating diseases that could benefit from MCI; government regulatory experts; nonprofit and academic groups interested in early diagnosis and public health; and members of the ISMRM Molecular Imaging and MR in Drug Research study groups.

“We have now ventured into an era in which molecular imaging is applied to help unravel our fundamental understanding of disease and implemented for the development and clinical evaluation of novel therapeutics. We encourage all molecular imaging colleagues to join this comprehensive workshop, to learn and network on the field’s significant contributions, impact and potential advances.”
— The Organizers

COMMITTEE CO-CHAIRS:

Willem M. Mulder, Ph.D.
Mount Sinai School of Medicine
New York, NY, USA

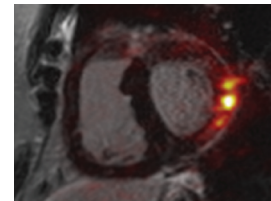
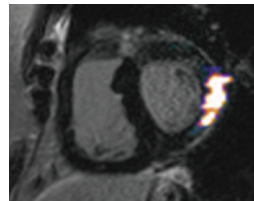
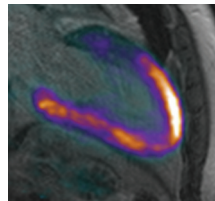
Klaas Nicolay, Ph.D.
Eindhoven University of
Technology
Eindhoven, The Netherlands

ORGANIZING COMMITTEE:

Alexei Bogdanov, Ph.D., Sc.D.
UMASS Medical School
Worcester, MA, USA

Peter Caravan, Ph.D.
Massachusetts General Hospital
Cambridge, MA, USA

Gustav Strijkers, Ph.D.
Academic Medical Center
Amsterdam, The Netherlands



OVERVIEW

The workshop program will focus on the integration of molecular and cellular imaging (MCI).

Key topics include MCI’s implementation to visualize disease immunology, to evaluate therapeutic efficacy and develop cellular therapeutics, as well as the integration of novel MCI methods in clinical studies.

The workshop will feature invited scientific presentations, proffered papers, a poster session and debates.

Continuing Medical Education (CME) credits are not offered for this workshop.

EDUCATIONAL OBJECTIVES

Upon completion of this activity, participants should be able to:

- Identify preclinical research that benefits from MCI;
- Describe MCI’s limitations and translational potential;
- Review MCI’s advances in cardiovascular, oncological and neurological research;
- Design contrast agents tailored towards specific MCI applications;
- Explain MCI’s impact on clinical trial design; and
- Recognize MCI’s significance in drug discovery.



FOR MORE INFORMATION INCLUDING HOUSING & REGISTRATION, PLEASE VISIT:

www.ismrm.org/workshops/MCMRI16/

OR CALL: +1 510 841 1899