

# Postdoctoral Research Fellow Position



UC San Diego  
SCHOOL OF MEDICINE

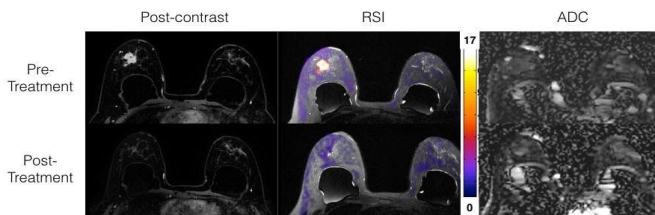
We are seeking a post-doctoral scholar with a strong technical background, who is ready to begin exploring the development and application of advanced diagnostic MR imaging techniques for women's health.

The Women's Imaging Lab focuses on advancing MRI for applications in the female pelvis and breast, including cervical, ovarian, uterine, and breast cancer, as well as fetal, endometriosis, and pelvic floor imaging.

Work will include collaborations with faculty and trainees from multiple departments at UC San Diego, including Oncology, Breast Surgery, Gynecology, Radiology, Radiation, Pathology, Bioengineering, and Medicine.

Our group has access to three state-of-the-art GE Discovery MR750 3T MRI scanners, which are dedicated to translational research scanning.

Rebecca Rakow-Penner MD, PhD, is an Associate Professor of Radiology and Bioengineering and director of the Women's Imaging Lab. Join us in advancing the state of the art in Women's imaging.



## Requirements:

- PhD in Medical Physics, Imaging Science, Bioengineering, Computer Science, Electrical Engineering or related field
- Experience with Matlab
- Prior MR research experience is preferred but not required
- Excellent organizational and problem-solving skills
- A track record of documented productivity

## How to apply:

Interested candidates should send a one-page statement of research interests and career goals and a full CV to:

Rebecca Rakow-Penner and Lab Manager Alexandra Schlein at:

[rrakowpenner@health.ucsd.edu](mailto:rrakowpenner@health.ucsd.edu) &  
[a1schlein@health.ucsd.edu](mailto:a1schlein@health.ucsd.edu)

Questions and inquiries are welcome.