

## Postdoctoral position developing DWI for abdominal cancer detection

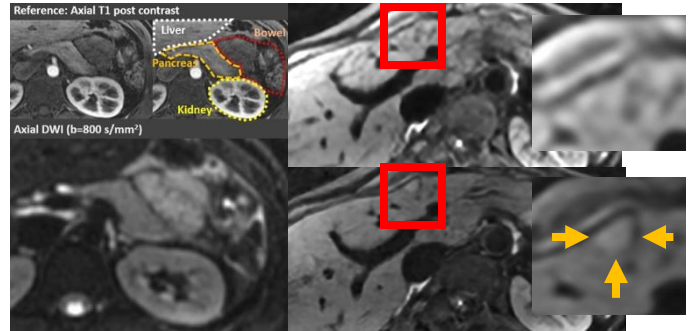


SF Bay Area

Stanford

Lucas Center

Pacific



M1-nulled msDWI

DL-based phase correction

**The Place:** The **Lucas Center for Imaging** is situated on the beautiful Stanford campus in the San Francisco Bay Area. The imaging center houses world class facilities including fully loaded 3T and 7T scanners.

**The Science:** We develop methods to improve phase estimation / correction and motion mitigation for multishot DWI in complex motion environments (abdomen), with translational pipelines into clinical practice.

**The Stanford Abdominal Diffusion Group** is seeking thoughtful, motivated and collaborative postdoctoral fellows to join a growing team developing motion-robust multi-shot DWI methods for liver, pancreatic, and whole-body cancer detection. We are interested in both technical development and clinical translation pipelines, leveraging resources at the Lucas Center for Imaging, synergies across the clinical MRI fleet, and vendor collaboration with GE Healthcare. Personal ideas and **collaborations with** other groups in **the Stanford Radiologic Sciences Lab are encouraged**. Current collaborators include Dan Ennis & Brian Hargraves.

### Who:

- MD, PhD, or equivalent
- Technical interest & expertise in MRI

### Relevant Skills:

- Expertise in MRI physics
- Experience with raw MRI data management
- Experience with MRI reconstruction
- Clinical studies: data collection / analysis
- Pulse sequence programming (ex: Pulseseq)
- Python, MatLab, C++, etc
- PyTorch, TensorFlow
- ML Ops

### Project areas:

- MRI reconstruction pipeline development
- ML methods for MRI recon & cancer detection
- MRI Pulse sequence development
- Translational pipeline development

**Appointments will be for a 1-or 2- year period**

**Application: First round application reviews will be on July 15, 2025**

**To apply:** Send CV, statement, and contacts for three references to Leslie Chan @

[Leschan1@stanford.edu](mailto:Leschan1@stanford.edu)

**Questions?:** Contact **Ryan L. Brunsing**

Associate Professor of Radiology and Medical Director of MRI @ [brunsing@Stanford.edu](mailto:brunsing@Stanford.edu)